



Accurately Weighing Africa



SPD-3000

**SURGE, POWER STABILISATION AND
LIGHTNING PROTECTION**

Critical Systems Protection

SASCO WEIGHING SYSTEMS

SMART SUPPORT

0861 422 134

OR +27 83 680 0722

E-mail: info@sascoafrica.com

Web: www.sascoafrica.com

24 hours, 7 Days a week

GROUP SUPPORT H/O

2 Blackburn Street

Apex Industrial | Benoni

Phone: +27 (0) 11 746 6000

Fax: +27 (0) 11 746 6100

SASCO'S SURGE, POWER STABILISATION AND LIGHTNING PROTECTION SYSTEM is vital to protect your weighing system's components from power surges, voltage instability and lightning.

Modern weighing systems rely heavily on high performance electronic components, which equal increase these components vulnerability to disruption and damage that can be caused by over voltage or lightning.

The **SPD-3000** system comprises three critical elements:

- SPD-3000 reliable power unit delivering surge protection and voltage stabilisation;
- Single point grounding of the entire system; and
- Faraday cage protection of the entire system.



Weighbridge Lightning Protection is vital due to the fact that weighbridges technology is vulnerable to lightning strikes, the consequences of which can be very expensive to repair, not to mention the knock-on effects of the weighbridge being out of order.

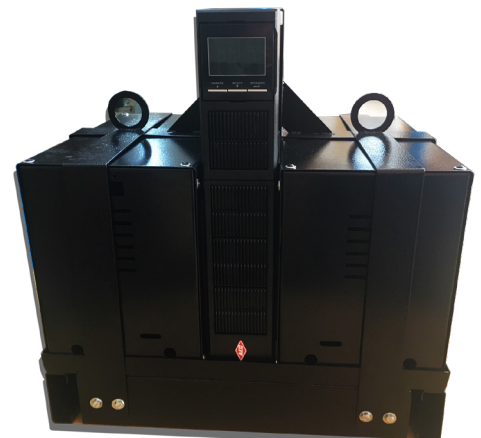
Surge Protection and Voltage Stabilisation

The SPD-3000 key feature is the fact that it is a “double conversion power unit” with an inbuilt input circuit breaker. This means that mains supply is rectified to a clean DC voltage and then is rebuilt into a very clean and regulated AC voltage.

The detailed specifications of the unit are:

SPD-3000 Specifications	
Topology Technology	OL Double conversion
Wave Form	Pure Sine Wave
Maximum Capacity	1000VA 800W
Nominal Input	230VAC
Input Frequency	50/60 HZ ± 4HZ
Input Voltage Regulation	160-300VAC @ 50% 176-300VAC @ 75%
Input Protection	Circuit Breaker
Crest Factor	3:1
Start	On battery
Nominal Output	220/230/240 VAC
Output Regulation	± 2%
Back Up Time	5 - 10 minutes at full load
Number Batteries	2 x 9 AH
Front Panel Indication	UPS Status, I/P Voltage, OP Voltage, Battery Voltage, Loading %, Temperature, History, Alarm
Audible Alarms	Yes
Comms Ports	RS232 USB Standard

SPD-3000

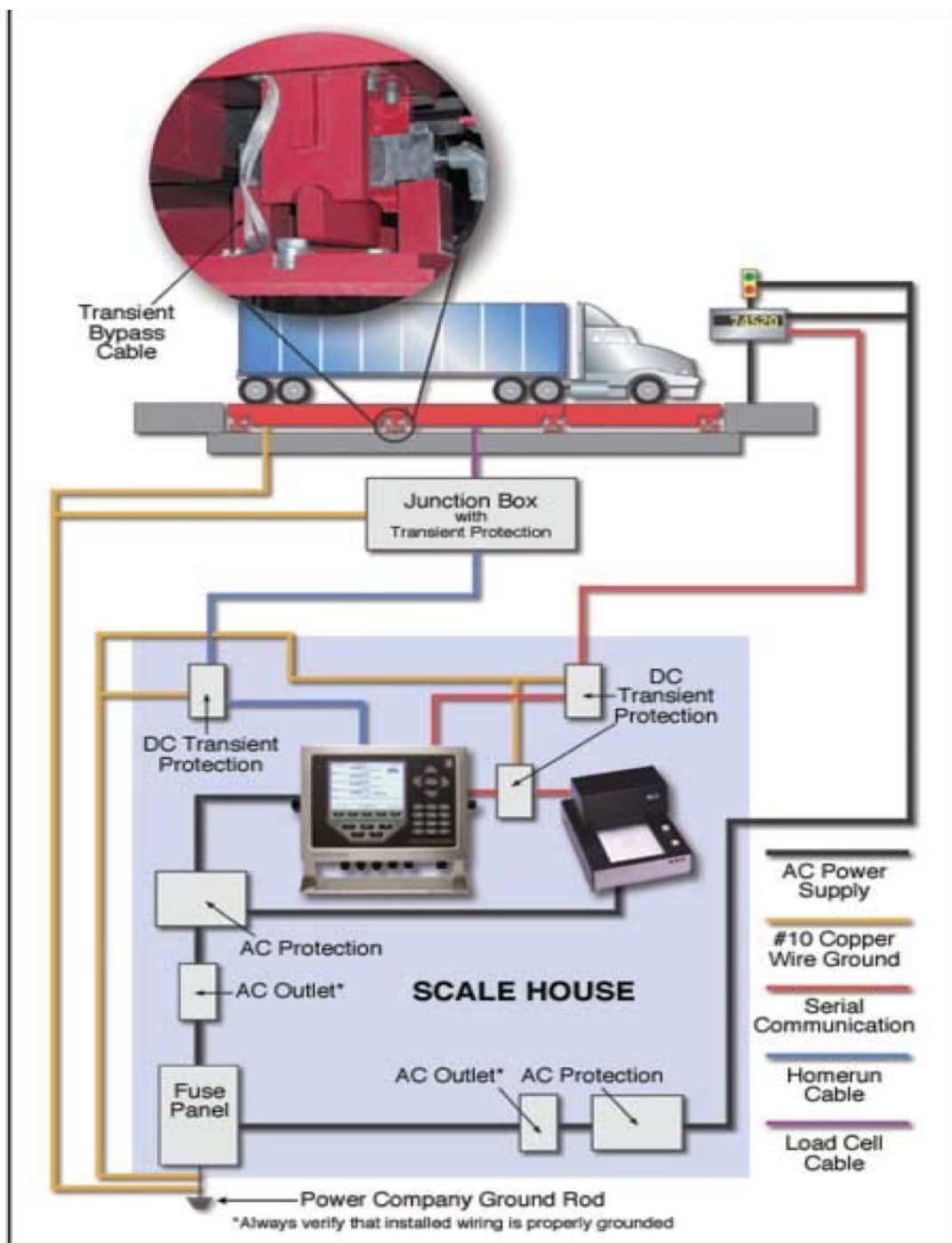


Single Point Grounding

Sasco's installation procedures include the following stringent procedures:

- All the components that make up the weighing system and the AC power connection are connected to one grounding rod.
- The resistance of each component is then tested using a Multi Meter to ensure that all readings are less than one ohm.

The following system diagram sets out precisely the procedures Sasco follows:



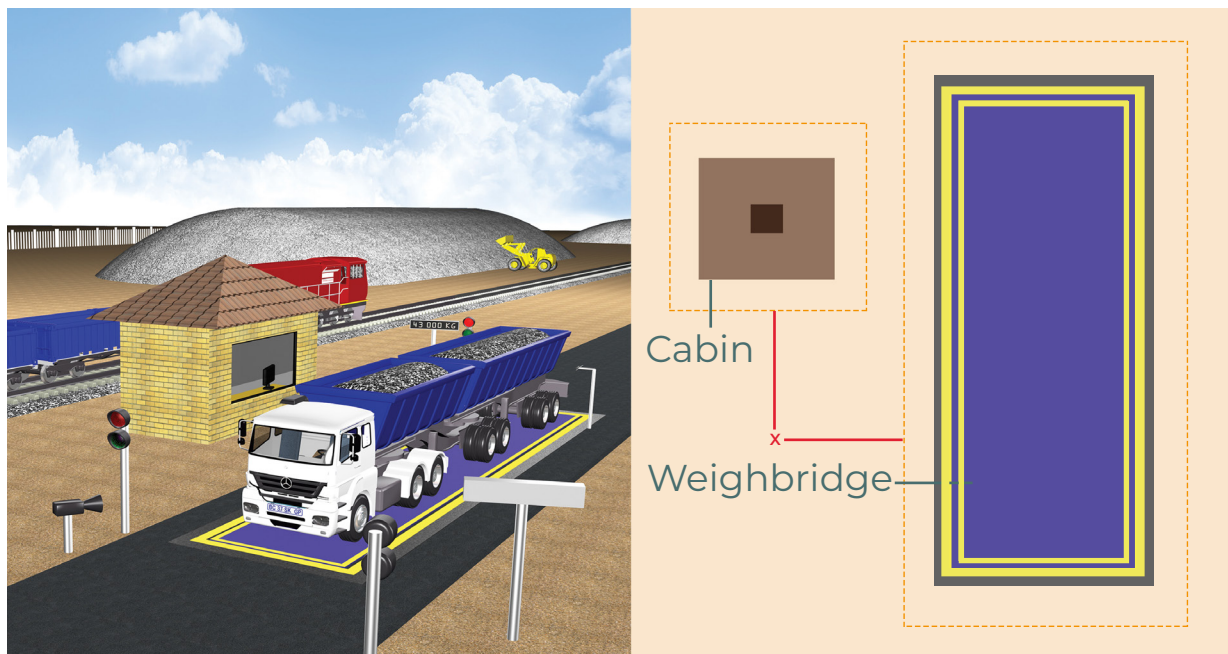
Faraday Cage Protection

In order to provide, in the event of a proximity lightning strike, equalisation throughout the entire weighing system, it is necessary to construct a Faraday Cage around both the weighbridge and weighbridge cabin.

If the distance between the two cages is relatively short, then the both cages should be connected to one grounding rod so that the system rises and falls at the same potential.

The Faraday Cage is comprised of 10mm copper cable buried to a depth of at least 30cm:

Diagram A



SMART SUPPORT
0861 422 134
OR +27 83 680 0722

E-mail: info@sascoafrica.com
Web: www.sascoafrica.com
24 hours, 7 Days a week

GROUP SUPPORT H/O
2 Blackburn Street
Apex Industrial | Benoni

This brochure contains a general guide of the product only and shall not form part of any contract unless specifically agreed by Sasco Africa in writing in each case on the Order Acknowledgement. The specification of the product described herein may vary from time to time and may be altered without notice. Sasco Africa, its directors, staff, owners and affiliated companies and organisations cannot be held liable for any resulting damage or injury sustained as a result of the machines being used in excess of their capacities and ultimate overload limits.