



Accurately Weighing Africa



PROWEIGH⁺

WEIGHING SYSTEMS SOFTWARE (PRO V4.6)

Proven, Practical, Popular

SMART SUPPORT

0861 422 134

OR +27 83 680 0722

E-mail: info@sascoafrica.com

Web: www.sascoafrica.com

24 hours, 7 Days a week

SASCO WEIGHING SYSTEMS

GROUP SUPPORT H/O

2 Blackburn Street

Apex Industrial | Benoni

Phone: +27 (0) 11 746 6000

Fax: +27 (0) 11 746 6100

About Sasco

Founded in 1910, Sasco is Southern Africa's largest industrial weighing company, providing a wide range of weighing products, automation and software solutions, calibration services, training and maintenance support to leading industrial companies across all industrial sectors spanning Southern African, with South Africa being the largest market.

Sasco competes with numerous smaller scale, automation and software companies in these countries. Our vision is to expand our leading market position in the supply and support of complete ranges of accurate, reliable cost-effective weighing automation systems and software to include more data integration, cloud solutions and other technologies that complement weighing, to the whole Sub-Saharan Africa market.

Mission

Our mission is to harness advances in weighing product reliability, accuracy, automation, data integration and systems connectivity and the wider technological revolution in cloud solutions and hardware inter connectivity and deliver these advances to customers across the whole of Sub-Saharan African, as cost effective and simplified weighing and related solutions, making their operations more productive and successful.

In the past, weighbridges were manned with software requirement being simply to produce a weighing ticket reflecting the weighing result. Customers today requiring any number of solutions ranging from the integration of the weighing results into an ERP system, axle compliance weighing, SOLAS weighing, truck arrival assimilation with authorized fleet databases and complete weighbridge automation.

Simplistic weighing software cannot deliver these solutions and bespoke software needs to be specified and developed and are therefore expensive.

Sasco therefore concluded that the optimal solution was a modular building block weighing software solution that was simple to use, cost effective and allowed for the addition of functionality modules as required.

PROWEIGH +

ProWeigh V1.0 was launched in September 2009 with the objective to provide a cost-effective off the shelf software solution with a modular building block approach to adding functionality.

Since ProWeigh's initial launch, substantial developments have been made to the software's functionality while retaining its simplicity. ProWeigh V4.6 today satisfies most customer's needs without any further customization or development being required.

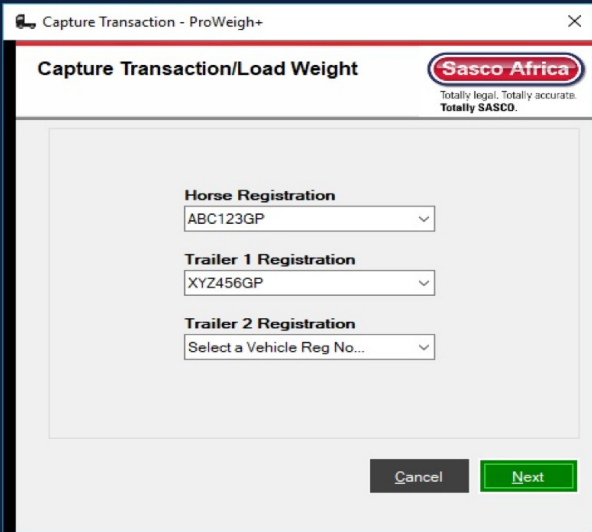
Proven

ProWeigh V4.6 has been developed incrementally from the initial base platform over a decade ago and is thus both proven and stable. This fact is further evidenced by the number of licenses that have been bought by customers spanning key sectors of the African economy.

Practical

A practical weighing solution is one that a weighbridge operators find easy to use. ProWeigh+ is exactly that software system:

CAPTURE HORSE AND TRAILER REGISTRATIONS



The screenshot displays the 'Capture Transaction - ProWeigh+' software window. The title bar includes a close button (X) and the text 'Capture Transaction - ProWeigh+'. The main window has a header with the title 'Capture Transaction/Load Weight' and the 'Sasco Africa' logo with the tagline 'Totally legal. Totally accurate. Totally SASCO.' Below the header, there are three registration fields, each with a dropdown menu:

- Horse Registration**: ABC123GP
- Trailer 1 Registration**: XYZ456GP
- Trailer 2 Registration**: Select a Vehicle Reg No...

At the bottom right of the window, there are two buttons: 'Cancel' and 'Next'.

AND IF AXLE WEIGHING FUNCTIONALITY ACTIVATED REVIEW MENU CONFIGURATION OPTIONS

Capture Transaction - Proweigh+

Capture Transaction/Load Weight

Is this the First weigh or
Is the Vehicle Empty or Loaded?

Is this the First weigh or
Is the Vehicle Empty or Loaded?

Horse Registration: HORSE123
Trailer 1 Registration: TRAILER123
Trailer 2 Registration: TRAILER123

Transporter Name: [Field]
Contact Person: [Field]
Contact Number: [Field]

Registration: HORSE123
Transporter Full Name: [Field]
Transporter Address: [Field]
Contact Person: [Field]
Payload: [Field]
Insurance Provider: [Field]
Cover Type: [Field]
Cover Policy Number: [Field]
Type: [Field]

Update

Cancel Back Next

AND IF AXLE WEIGHING FUNCTIONALITY ACTIVATED SELECT CORRECT CONFIGURATION

Capture Transaction - Proweigh+

Capture Transaction/Load Weight

Is this the First weigh or Second weigh? ☐ First ☒ Second
Is the Vehicle Empty or Loaded? ☐ Empty ☒ Loaded

Horse Registration: HORSE123
Trailer 1 Registration: TRAILER123
Trailer 2 Registration: TRAILER123

Transporter Name: [Field]
Contact Person: [Field]
Contact Number: [Field]

Registration: HORSE123
Transporter Full Name: [Field]
Transporter Address: [Field]
Contact Person: [Field]
Payload: [Field]
Insurance Provider: [Field]
Cover Type: [Field]
Cover Policy Number: [Field]
Type: [Field]

Update

Cancel Back Next

CAPTURE GROSS WEIGHT ON FIRST WEIGHING

Weigh Transaction Entry - ProWeigh+

Weighbridge Name Road train weighbridge2

Transport Details

Weight Type: SALES LOAD
Vehicle Reg No: HORSE123
Capacity / Tare Weight: 0 / 0
Transporter Code: Private Transporter: Private Trai
Driver Name 1st Weigh: Jonny
Driver Name 2nd Weigh:
Destination Location:
Load Type: ☒ Import ☐ Export
Border Gate:

Ticket Details

Ticket Number: SMS00000016
Date / Time: 2022/09/02 13:04:06

First Operator Weigh

Weight: 0 kg
Date Time:
Operator:

Second Operator Weigh

Weight: 0 kg
Date Time:
Operator:

Weigh Calculations (kg)

Diff 1st and 2nd: 0
Order Weight Diff: 0
Total Cost: 0.00

Weigh Load Now

21000 Weigh Load
Vehicle stopped

Save
Clear
User Defined
Check Results
Questions
Close
Back

CAPTURE GROSS WEIGHT ON SECOND WEIGHING

Weigh Transaction Entry - ProWeigh+

Weighbridge Name Road train weighbridge

Transport Details

Weight Type: SALES LOAD
Vehicle Reg No: HORSE123
Capacity / Tare Weight: 0 / 0
Transporter Code: JoAl:
Driver Name 1st Weigh:
Driver Name 2nd Weigh:
Destination Location:
Load Type: ☒ Import ☐ Export
Border Gate:

Invoice Details

Document Type: ☒ Invoice ☐ Picking Slip
Document Number:
Customer No:
Address:
Document Weight: 0 kg

Ticket Details

Ticket Number: SMS00000016
Date / Time: 2022/06/01 15:39:44

First Operator Weigh

Weight: 21 000 kg
Date Time: 2022/06/01 15:33:57
Operator: sa

Second Operator Weigh

Weight: 0 kg
Date Time:
Operator:

Weigh Calculations (kg)

Diff 1st and 2nd: 21 000
Order Weight Diff: 21 000
Total Cost: 0.00

Weigh Load Now

54800 Weigh Load
Vehicle stopped

Save
Clear
User Defined
Check Results
Questions
Close
Back

PRINT STANDARD WEIGHING TICKET (NO AXLE WEIGHING)

Print - Weighbridge Ticket Slip

WEIGHBRIDGE TICKET SLIP

Weighbridge Name	Road train weighbridge
Company Name	Assmang Blackrock Mine Operation
Horse Registration	HORSE123
Weighbridge Type	Road

TICKET NUMBER SMS00000018 TICKET DATE 2022/09/02 12:44

Transporter Details

Transporter Code	Private Transporter	Driver Name 1st Weigh	Johnny
Transporter Name		Driver Name 2nd Weigh	Johnny
Vehicle Capacity (kg)	0	Destination	Port
Vehicle Tare Weight (kg)	0		

ERP Document Details

Document Type	Sales	Supplier Load Weight (kg)	0
Document Order Weight (kg)	0	Supplier Grade	
Picking Slip Number	124245	Delivery Note	
		Moisture Content	0.00

First Weigh Details Second Weigh Details Weigh Calculations

Load Type	Empty	Load Type	Fully Loaded	NETT Weight (kg)	33,800
Weight (kg)	21,000	Weight (kg)	54,800	Product NETT (kg)	33,800
Date Time	2022/09/02 12:42	Date Time	2022/09/02 12:44	Total Difference	33,800
Operator	SA	Operator	SA	Total Cost	0.00

Document Number	Document Weight	Customer Number	Customer Name
124245	0		Ecorato

DRIVER _____ OPERATOR _____
CELL NO _____ DATE _____

Supplied by Sasco Metrology Services (PTY) LTD (v4.6.2) 1 of 1

OR IF AXLE WEIGHING FUNCTIONALITY ACTIVATED
CAPTURE SECOND WEIGHING THROUGH THIS MENU

Process Axle Weigh

Vehicle Details

Horse Registration	VEHICLE	Horse Steering Axles	1	TOTAL No. Axles	7
Capacity (KG)	0	Horse No. of Axles	3	TOTAL No. Axle Groups	3
Tare Weight (KG)	0	Horse No. of Axle Groups	1	TOTAL Capacity (KG)	36 000

Trailer Configuration

Trailer Registration	Vehicle Code	No. of Axles	No. of Axle Groups	Capacity (KG)	Tare Weight (KG)
TRAILER123	T-D2	2	1	18000	0
TRAILER456	T-D2	2	1	18000	0

Configuration Vehicle Code

A1-D2:T-D2:T-D2

Axle 1	Axle 2	Axle 3	Axle 4	Axle 5	Axle 6	Axle 7
7600	7400	8600	7900	8100	8050	8350

Group 1	Group 2	Group 3	Group 4
7 600	16 000	16 000	16 400
7700	18000	18000	18000
Pass	Pass	Pass	Pass

Wweigh Load Now

56000


Vehicle stopped

Start Weigh Weigh Load

Abort Weighing Done

THEN PRINT WEIGHING TICKET WHICH INCLUDES AXLE PERMISSABLE WEIGHTS AND TOTAL WEIGHTS

THIS DOCUMENTATION IS COMPLIANT WITH THE NATIONAL ROAD TRAFFIC AMENDMENT ACT, 64 OF 2008


Version 4.6.2

WEIGHBRIDGE TICKET SLIP
 Horse Registration: VEHICLE
 Weighbridge Name: Road train weighbridge2
 Company Name: Assmang Blackrock Mine Operation
 Site Name: ****
 Product: ****
 *** COPY ***

TICKET NUMBER	SMS00000019	TICKET DATE	2022/09/02 13:47
----------------------	-------------	--------------------	------------------

VEHICLE DETAILS			
Registration Number	VEHICLE	TRAILER123	TRAILER456
Type	****	****	****
Operator	Private	****	****
Contact Person	****	****	****
Insurance Provider	****	****	****
Cover Type	****	****	****
Policy Number	****	****	****

TRADE WEIGHING DETAILS			
<u>First Weigh Details</u>		<u>Second Weigh Details</u>	
Weight (kg)	21,000	Weight (kg)	56,000
Date Time	2022/09/02 13:43	Date Time	2022/09/02 13:46
Operator	sa	Operator	sa
		<u>Weigh Calculations</u>	
		NETT Weight (kg)	35,000
		Product NETT (kg)	35,000
		Total Difference	35,000
		Total Cost	0.00

LOADING DETAILS				
Axle Groups	Actual (kg)	Permissible (kg)	Difference (kg)	
Group 1	7,600	7,700	-100	
Group 2	16,000	18,000	-2,000	
Group 3	16,000	18,000	-2,000	
Group 4	16,400	18,000	-1,600	
TOTALS	56,000	61,700	-5,700	Speed 0.00 km/h

CONSIGNEE DETAILS	
Consignee Code	Address
Consignee Name	
Document Number	ROA0000000002
Document Type	Sales
Document Weight	0
Contact Name	****
Contact Number	****

CONSIGNOR DETAILS	
Consignor Name	Assmang Blackrock Mine Operation
Address	****
Contact Name	****
Contact Number	****

Popular

Over a 1,000 ProWeigh+ licenses have been installed in across eight African countries, making ProWeigh + the most popular off the shelf weighbridge software in the Southern African market.

The functionality which has made ProWeigh+ so popular includes the following features:

- SELF INSTALLATION WITH INCLUSIVE SET UP TUTORIAL.
- INTERFACES WITH A WIDE RANGE OF WEIGHING INDICATORS.
- COMPATABLE WITH MANY DIFFERENT TYPES OF TRUCK WEIGHING SCALES.
- WIDE RANGE OF DEFINABLE MANDATORY AND CUSTOM INPUT FIELDS.
- PURCHASING AND PRODUCT MODULE INCLUDED AS STANDARD.
- FLEET TRANSPORTER MODULE INCLUDED AS STANDARD.

- WEIGHING TICKET EMAILING MODULE AS STANDARD.
- AXLE WEIGHING REPORTING MODULE INCLUDED AS STANDARD.
- PERMISSABLE AXLE LOADING LIMIT SET UP COUNTRY SPECIFIC.
- SOLAS COMPLIANT CONTAINER WEIGHING.
- ABILITY TO SET SPECIFIC % TOLERANCE OVERLOADING LIMITS.
- CAPABLE OF INTERFACING WITH MULTIPLE WEIGHBRIDGES.
- UNLIMITED NUMBER OF USERS PER SINGLE LICENSE.
- USER RIGHTS CAN BE SET PER INDIVIDUAL USER.
- AUTOMATED AUDITED TRAILS GENERATED FOR ALL TRANSACTIONS.
- AUTOMATED AUDIT TRAIL GENERATED FOR ALL SET UP CHANGES.
- DATABASES ALL MICROSOFT SEQUAL BASED.
- OPTION TO ADD ON ERP BUSINESS CONNECTOR MODULE.
- OPTION TO ADD ON AUTOMATION MODULE.
- OPTION TO UPGRADE TO PORTUGUESE AND FRENCH LANGUAGE MODULE.
- OPTION TO INTEGRATE SOLAS WEIGHING TO THE GLOBAL NAVIS CONTAINER SYSTEM.
- OPTION TO UPGRADE TO FUTURE VERSIONS.
- OPTION OF PURCHASING ADDITIONAL ONLINE SET UP SUPPORT.
- OPTION OF FURTHER CERTIFIED ONLINE TRAINING.
- ATTRACTIVELY PRICED.
- NO ANNUAL LICENSE FEES.
- DEVELOPED AND SUPPORTED FROM SOUTH AFRICA.

Creating Report Formats

ProWeigh+ has a highly flexible reporting functionality allowing for the customization of Report Formats.

The most common report format used for standard **Truck Weighing Tickets** include the following ticket fields:

- Site owner's logo and particulars.
- Weighbridge name and location.
- Ticket number.
- Transporter details.
- Horse and trailer registrations.
- Driver name.
- Cargo type.
- A range of cargo related particulars and related values.
- Time and date of first and second weighing.
- Empty weight, fully loaded weight and net weight.
- Weighbridge operator

The most common report format used for **Axle Weighing Enabled Truck Weighing** include the following additional ticket fields:

- Permissible axle group weights
- Actual axle group weights
- Differences (over or under loaded per axle group).
- Total permissible weight.
- Total actual weight.
- Difference (over or under loaded on total weight).

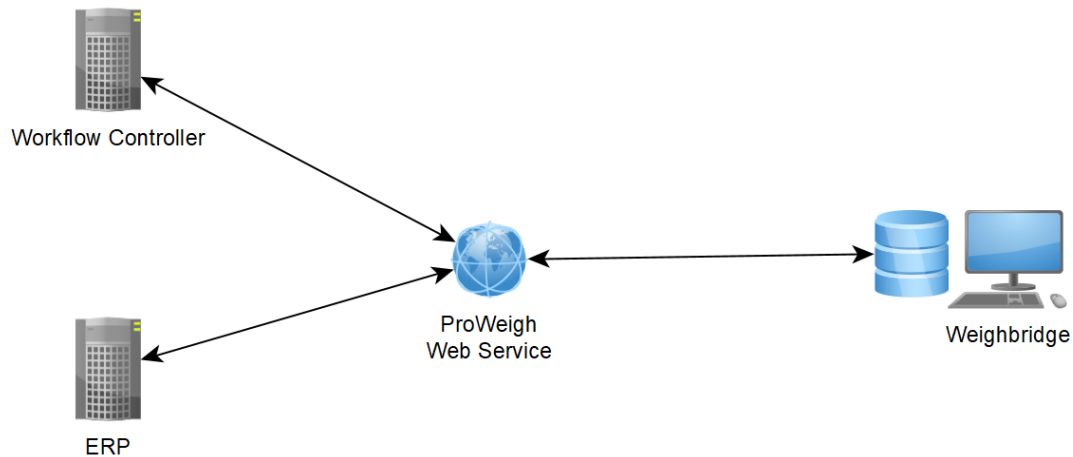
The most common report format used for **SOLAS** Tickets include the following fields:

- Weighbridge name and location.
- Weighbridge SANAS approval number.
- Calibration certificate number and date of calibration.
- Horse and trailer registrations.
- Customer name.
- Container number.
- ISO type.
- Load type.
- Container tare.
- Serial number.
- Combined vehicle empty weight.
- Gross vehicle weight.
- Gross cargo weight.
- Net cargo weight.

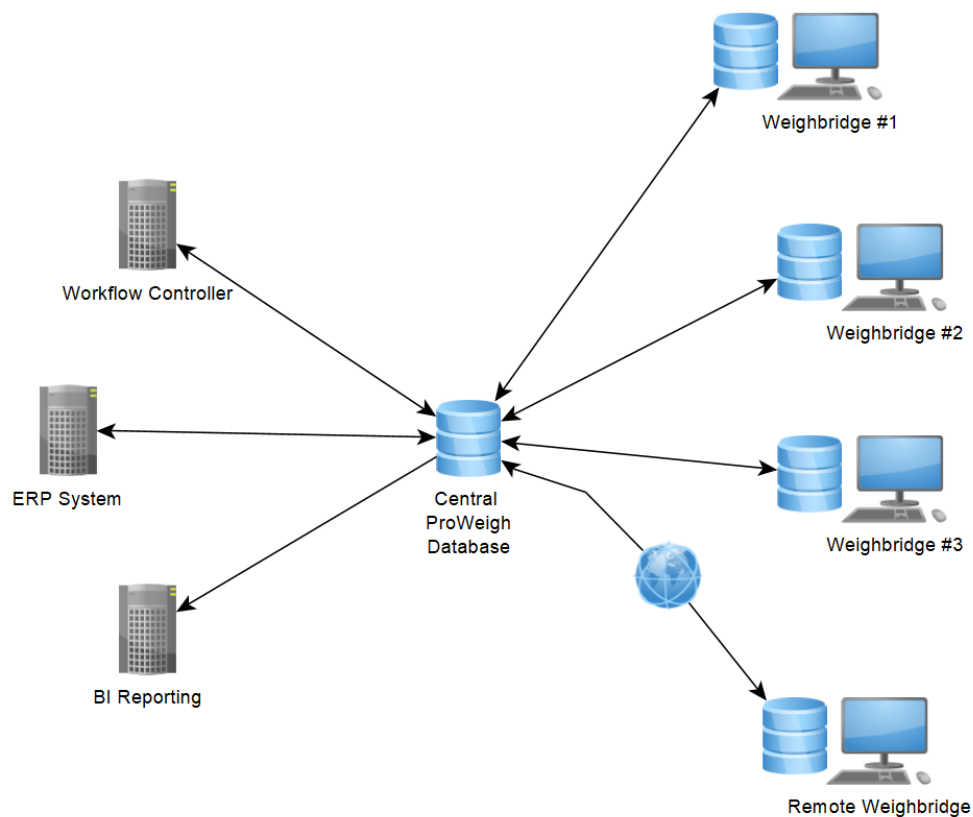
Data Integration

The **optional Business Connector Module** enables all data included in given Report formats to be interfaced with ERP Systems. Two distinct integration methods are offered:

ProWeigh Web Services



ProWeigh Business Connector



The optional **NAVIS Interfacing Module** enables the interfacing on the container details and weights with the **NAXIS** global ERP container management system.

Online Operator, User and Supervisor Training

Efficient weighbridge operations require that all persons involved in the weighing processes are fully empowered to perform as expected. This requires training.

Users of ProWeigh+ have the option of being certified under the following online courses, full details of which can be found at www.sascoafrica.com/courses

- Certified Weighbridge Operator course
- Certified ProWeigh+ Operator course.
- Certified ProWeigh+ Supervisor course
- Certified ProWeigh+ Technician course.

Application Case Study

Company A is a large terminal operator in a major African port. Inbound and outbound cargos comprise mixed break bulk and containers

Sasco was initially approached to supply four standard digital 24m weighbridges with weighing software capable of maintaining a database of approved trucks and capable of generating a standard weighing ticket showing the truck registration, time of weighing inbound and outbound weight, empty weight, gross weight and net cargo weight.

Four Sasco WB 80T CPD digital weighbridges were installed with instrumentation capable of generating both total weight and axle weights.

ProWeigh+ was installed but once **Company A** realized the potential of the software Sasco was requested to do a four-phase software and weighing automation upgrade comprising:

- **Phase One:** Upgrade the firmware in the DD1010 indicator supplied with the weighbridge to enable the indicator to generate axle weights as well as total weight and to modify the approaches to the weighbridge so that for the last 15m on the outbound approach the truck is level.
- **Phase Two:** Via remote support activate the axle weighing reporting module and SOLAS weighing Module included as standard on ProWeigh+.
- **Phase Three:** Install additional automation hardware on the weighbridge comprising a traffic boom, traffic lights, position sensors and an APNR camera, and upgrade the ProWeigh+ license to include the Automation add on module to manage the new automation hardware.

- **Phase Four:** On completion of Phases One, Two and Three, upgrade the ProWeigh+ license to include Business Connector, thus providing a seamless integration of the weighing data generated and reflected on the weighing ticket to Company A's ERP system.

System Requirements

Based on current 2022 computer specifications, ProWeigh+ has the following system requirements:

- CPU: Intel Core i5 (8th generation or newer) or AMD Ryzen 5 (3000 Series or newer)
- RAM: 8GB or Higher
- Storage: 500GB or More
- Network: Ethernet and Wi-Fi
- Serial Port if serial communication needed
- USB: 4 ports minimum
- Display Resolution: 1920 x 1080
- Operating System: Windows 10 or Windows 11

These will from time to time change as computer technology and operating systems advance.

Automation Hardware Options

ProWeigh+ Automation module can integrate with and control the following automation devices:

- | | |
|-----------------------------------|------------------------------|
| • 2 Traffic Lights. | • 1 QR Code Reader. |
| • 2 Traffic Booms. | • 1 RFID Reader. |
| • 2 Truck Position Sensors. | • 1 ANPR Camera. |
| • 1 Driver Terminal with Printer. | • Multiple Snapshot Cameras. |

SMART SUPPORT

0861 422 134

OR +27 83 680 0722

E-mail: info@sascoafrica.com

Web: www.sascoafrica.com

24 hours, 7 Days a week

LOCAL SUPPORT AGENT

This brochure contains a general guide of the product only and shall not form part of any contract unless specifically agreed by Sasco Africa in writing in each case on the Order Acknowledgement. The specification of the product described herein may vary from time to time and may be altered without notice.